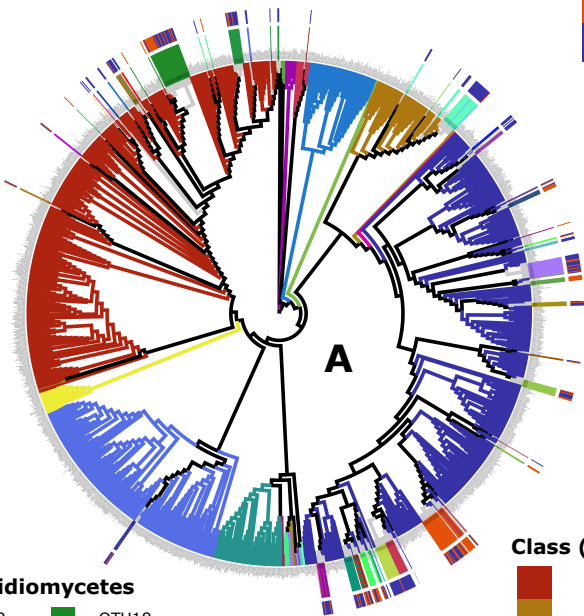


(A) Pezizomycotina (all)

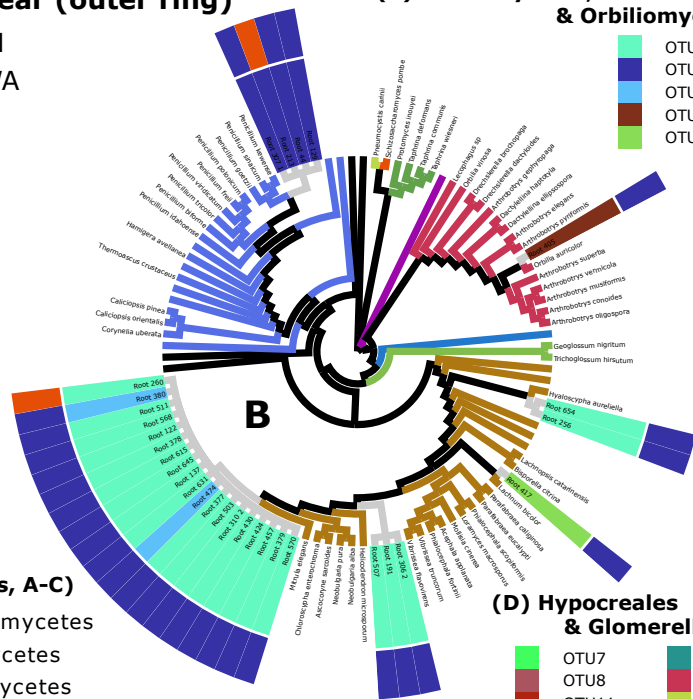
Seedling state, first year (outer ring)

IN  
WA



(B) Leotiomyces, Eurotiomyces & Orbiliomyces

OTU22  
OTU24  
OTU39  
OTU42  
OTU44

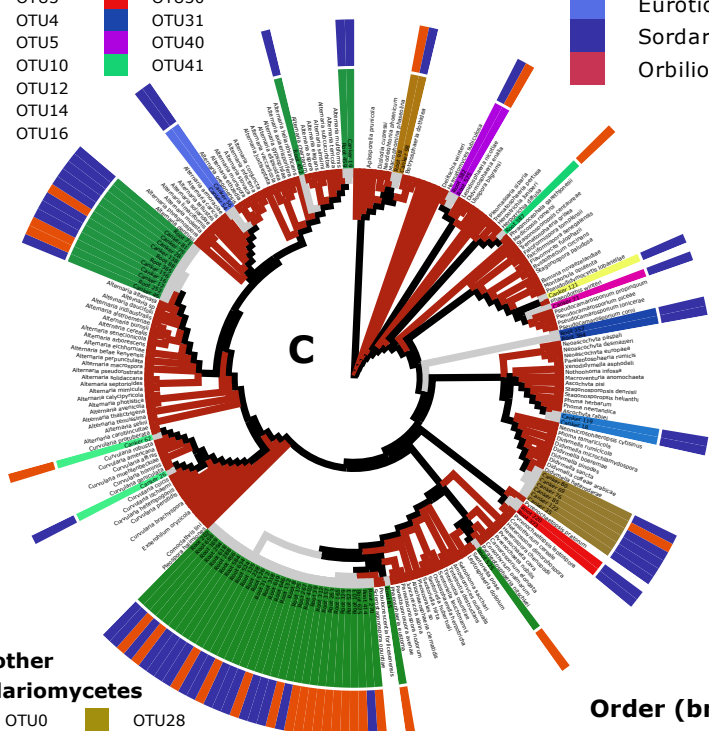


(C) Dothidiomycetes

OTU2  
OTU3  
OTU4  
OTU5  
OTU10  
OTU12  
OTU14  
OTU16  
OTU18  
OTU30  
OTU31  
OTU40  
OTU41

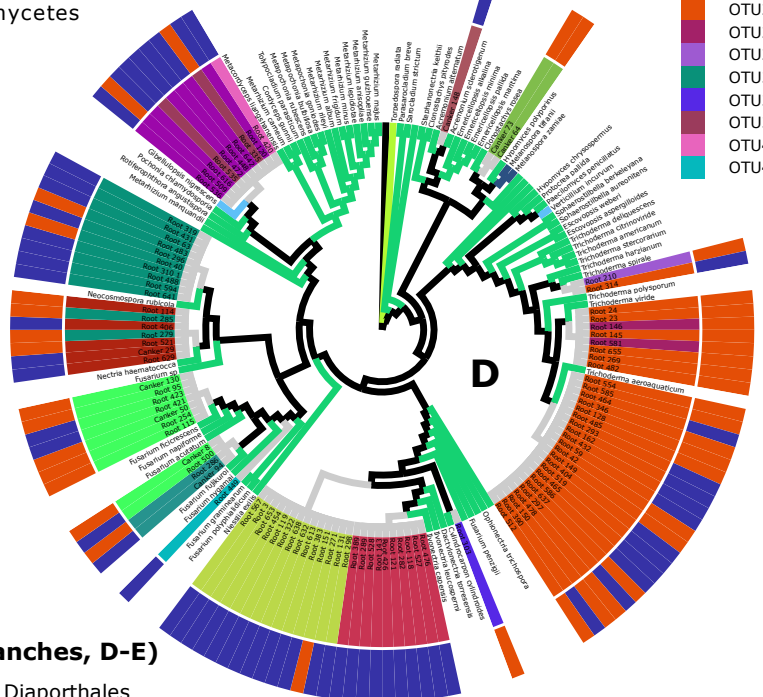
Class (branches, A-C)

Dothideomycetes  
Leotiomyces  
Eurotiomyces  
Sordariomycetes  
Orbiliomyces



(D) Hypocreales & Glomerellales

OTU7  
OTU8  
OTU11  
OTU13  
OTU15  
OTU19  
OTU20  
OTU21  
OTU23  
OTU26  
OTU29  
OTU34  
OTU36  
OTU38  
OTU45  
OTU46

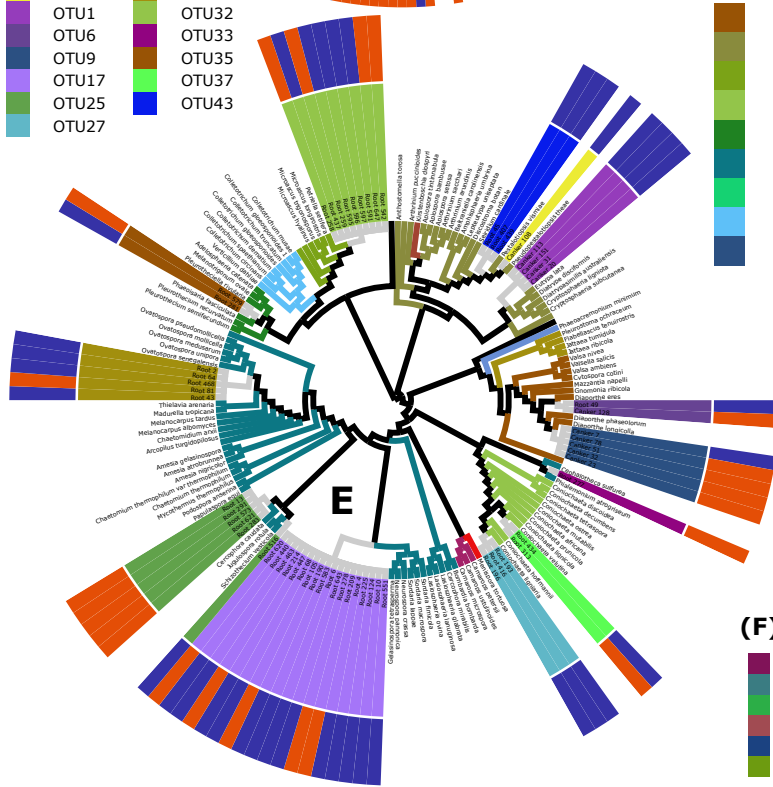


(E) other Sordariomycetes

OTU0  
OTU1  
OTU6  
OTU9  
OTU17  
OTU25  
OTU27  
OTU28  
OTU32  
OTU33  
OTU35  
OTU37  
OTU43

Order (branches, D-E)

Diaporthales  
Xylariales  
Microascales  
Coniochaetales  
Pleurotheciales  
Sordariales  
Hypocreales  
Glomerellales  
Melanosporales



(F) Rhizoctonia

RhizoctOTU0  
RhizoctOTU1  
RhizoctOTU2  
RhizoctOTU3  
RhizoctOTU4  
RhizoctOTU5  
RhizoctOTU6  
RhizoctOTU7  
RhizoctOTU8  
RhizoctOTU9  
RhizoctOTU10  
RhizoctOTU11

